

ADDENDUM
PAGE 1 OF 1

OWNER:	City of Plymouth 201 Main Street Plymouth, MI 48170
ENGINEER:	Fishbeck 4775 Campus Drive Kalamazoo, MI 49008
DRAWING REVISION NO.:	A2
ISSUED HEREWITH:	
SHEETS:	SR502
BIDS DUE:	August 25, 2022, 10:00 a.m. (ET)

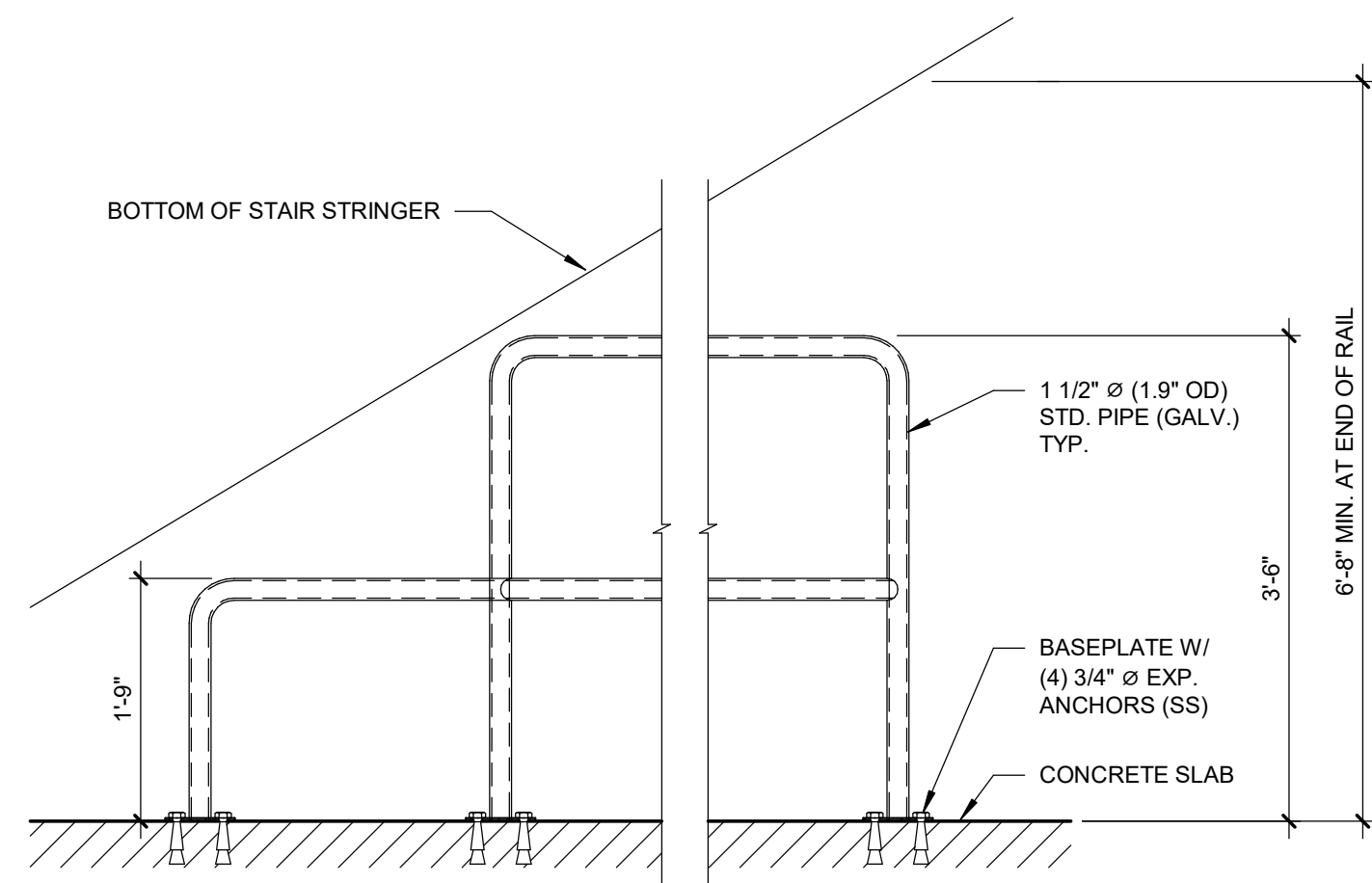
This Addendum is issued to all Bid Set Holders, is a part of the Contract Documents, and modifies the previously issued Bidding Documents. Acknowledge receipt of this Addendum in the space provided on the Bid form; failure to do so may result in rejection of the Bid.

ITEM NO. 1:

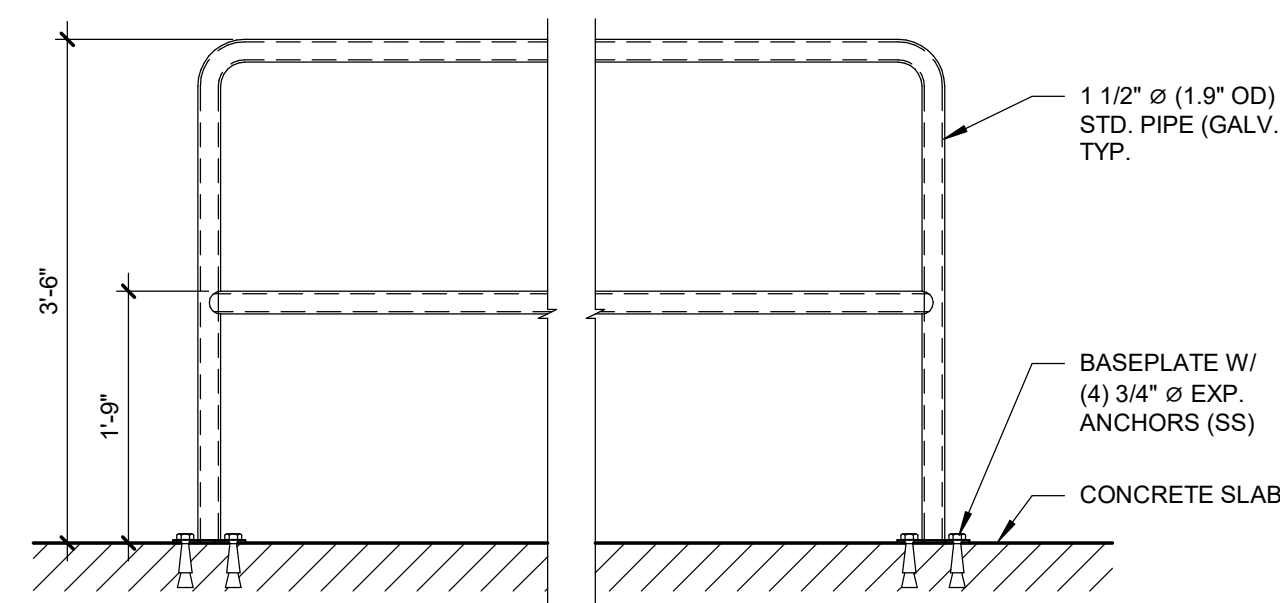
Sheet: SR502 – Structural Details (reissued)

- A. Delete Sheet SR502 and substitute with attached Sheet SR502 – Addendum 2 dated 08/18/2022.
 - 1. Revisions: Detail 3/SR502 – Provide slide bearing as shown. Revised bridge bearing dimension and provided clarification on acceptable material and manufacturers.

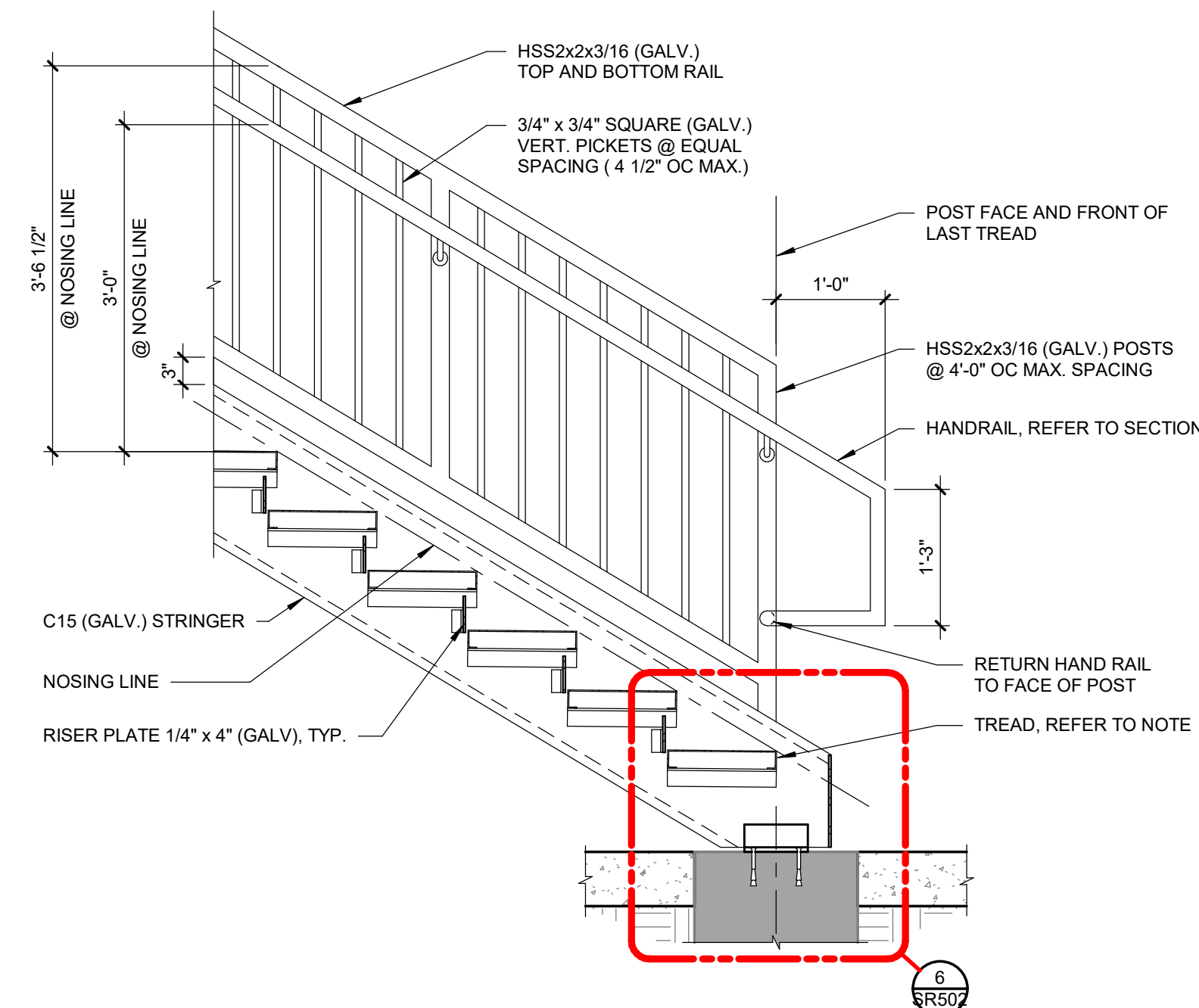
END OF ADDENDUM



9 RAIL DETAIL
SCALE: 3/4" = 1'-0"

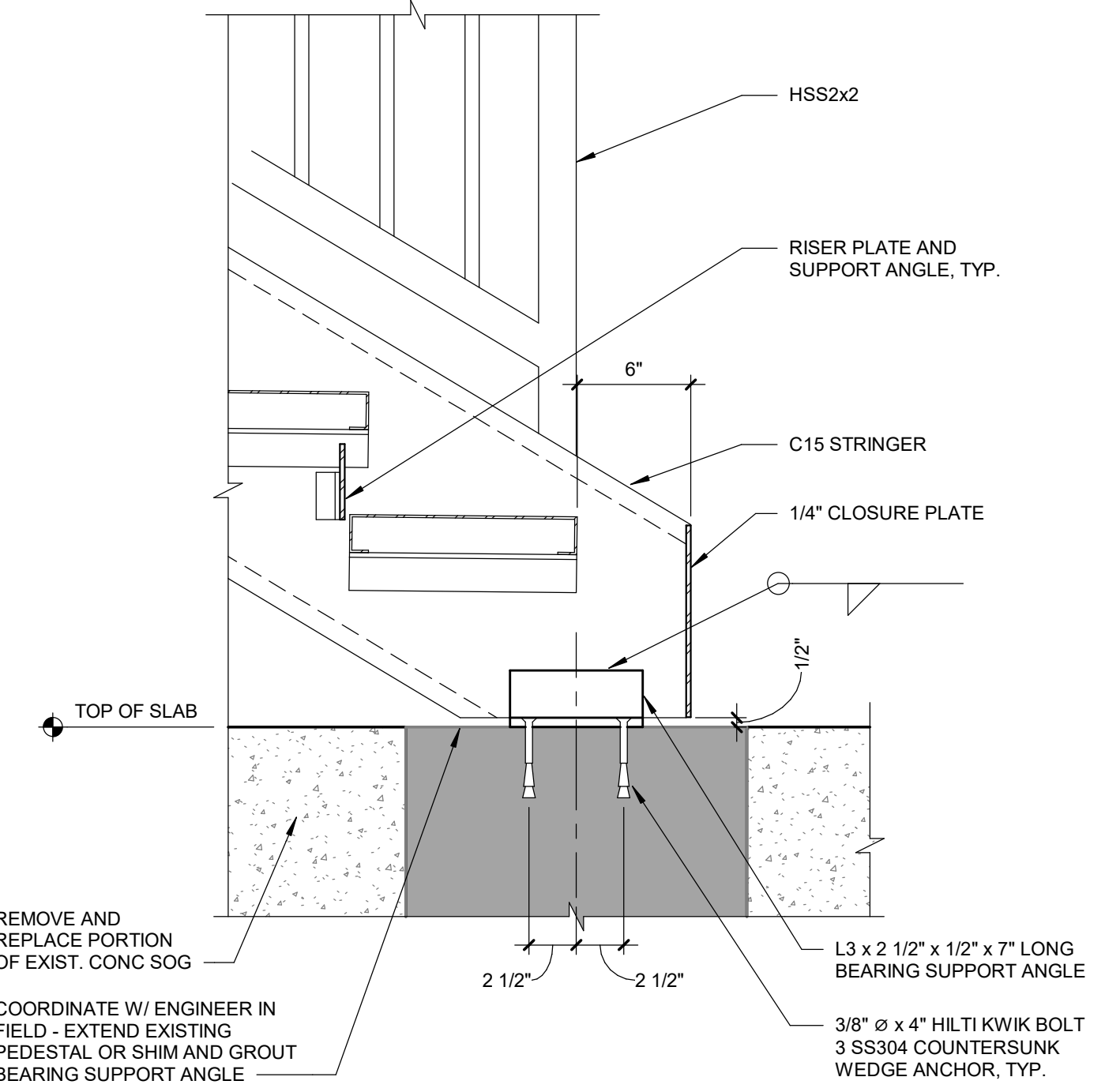


8 RAIL DETAIL
SCALE: 3/4" = 1'-0"



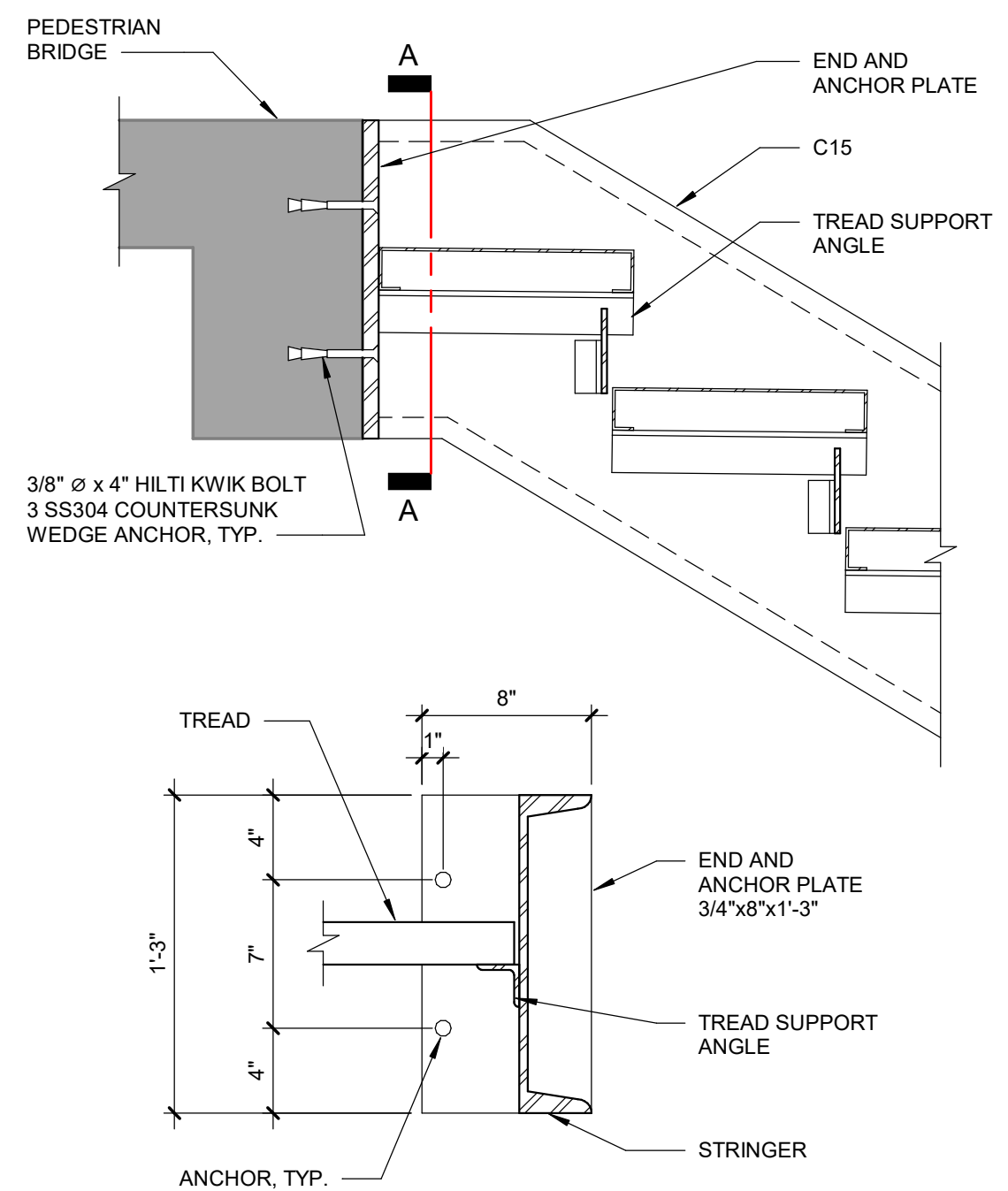
7 STAIR SECTION
SCALE: 3/4" = 1'-0"

NOTE: STAIR TREADS SHALL BE CONSTRUCTED OF 2" X 12" NOMINAL CHANNEL UNITS, ALUMINUM MATERIAL, MEET ADA REQUIREMENTS, SLIP-RESISTANT SURFACE, AND PERFORATED WITH 4% MINIMUM OPEN AREA. PERFORATIONS SHALL NOT ALLOW PASSAGE OF 1/2" DIAMETER SPHERE. PRODUCT: MCNICHOLS PLANK GRATING, PLANK, TRACTION TREAD (OR APPROVED EQUIVALENT). INSTALL PLANKS WITH 1/8" PER FOOT SLOPE TO DRAIN DOWN TO FRONT.

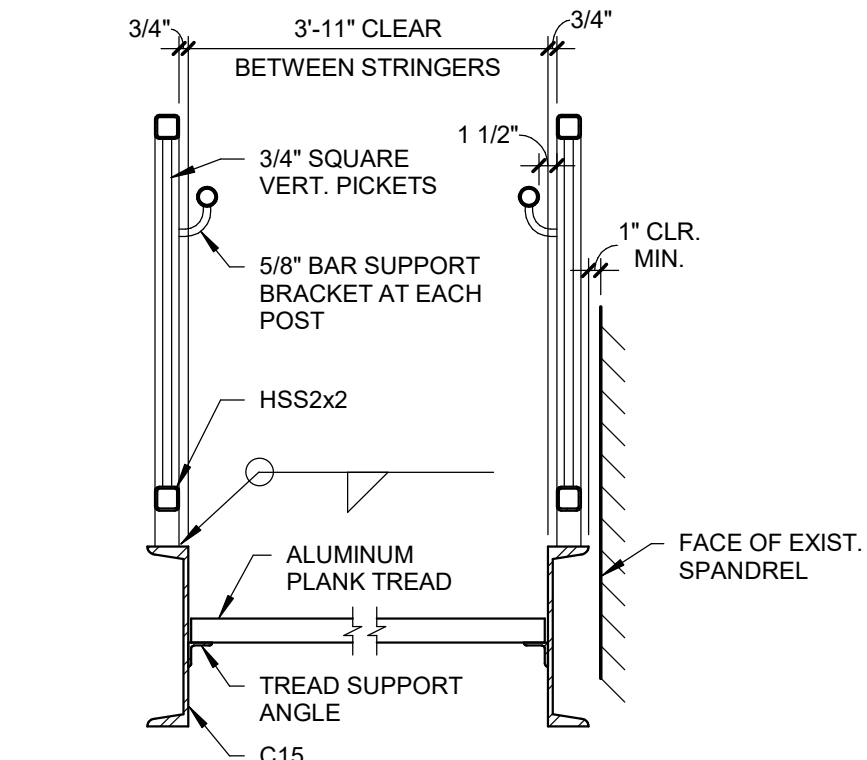


6 STAIR SECTION
SCALE: 1 1/2" = 1'-0"

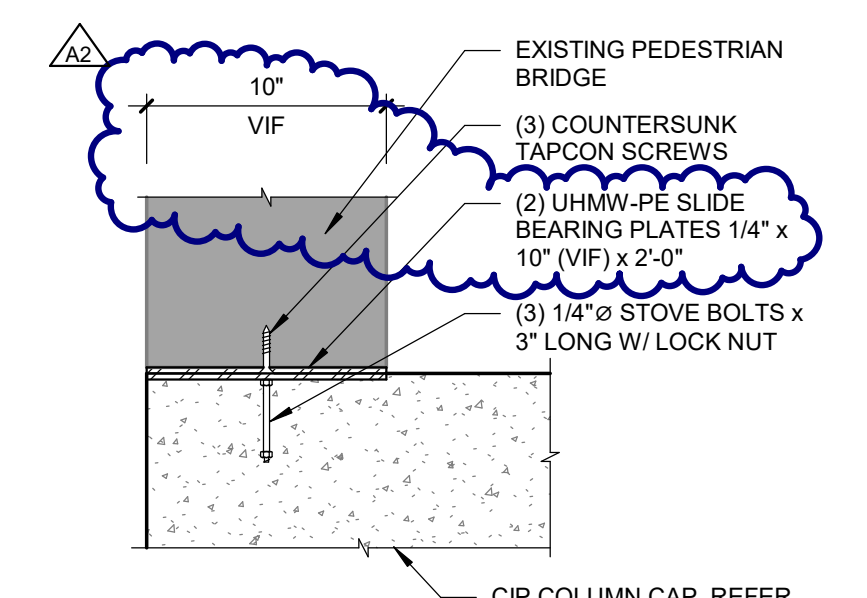
REMOVE AND REPLACE PORTION OF EXIST. CONC SOG
COORDINATE W/ ENGINEER IN FIELD - EXTEND EXISTING PEDESTAL OR SHIM AND GROUT BEARING SUPPORT ANGLE



5 STAIR SECTION
SCALE: 1 1/2" = 1'-0"

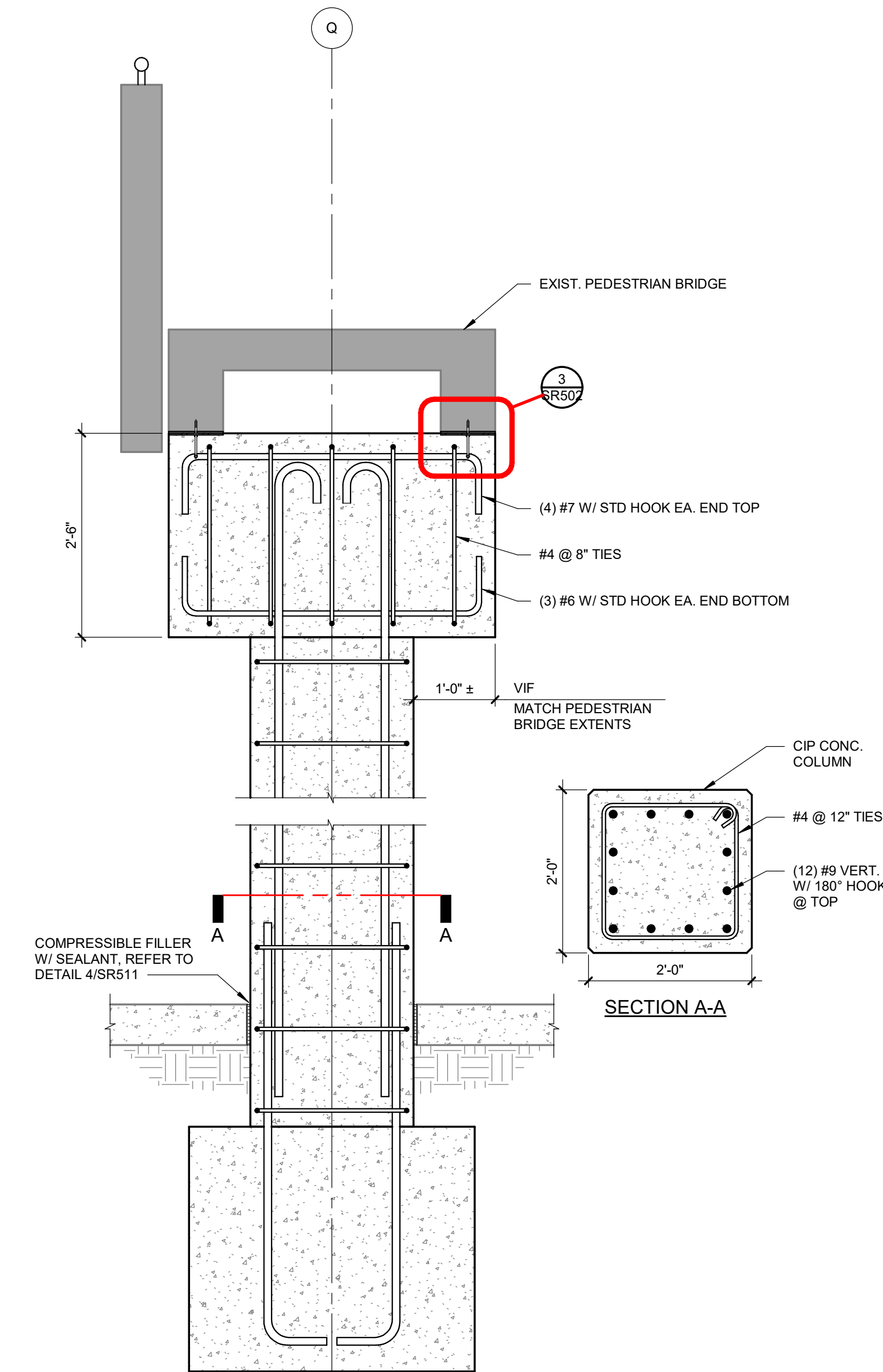


4 STAIR SECTION
SCALE: 3/4" = 1'-0"

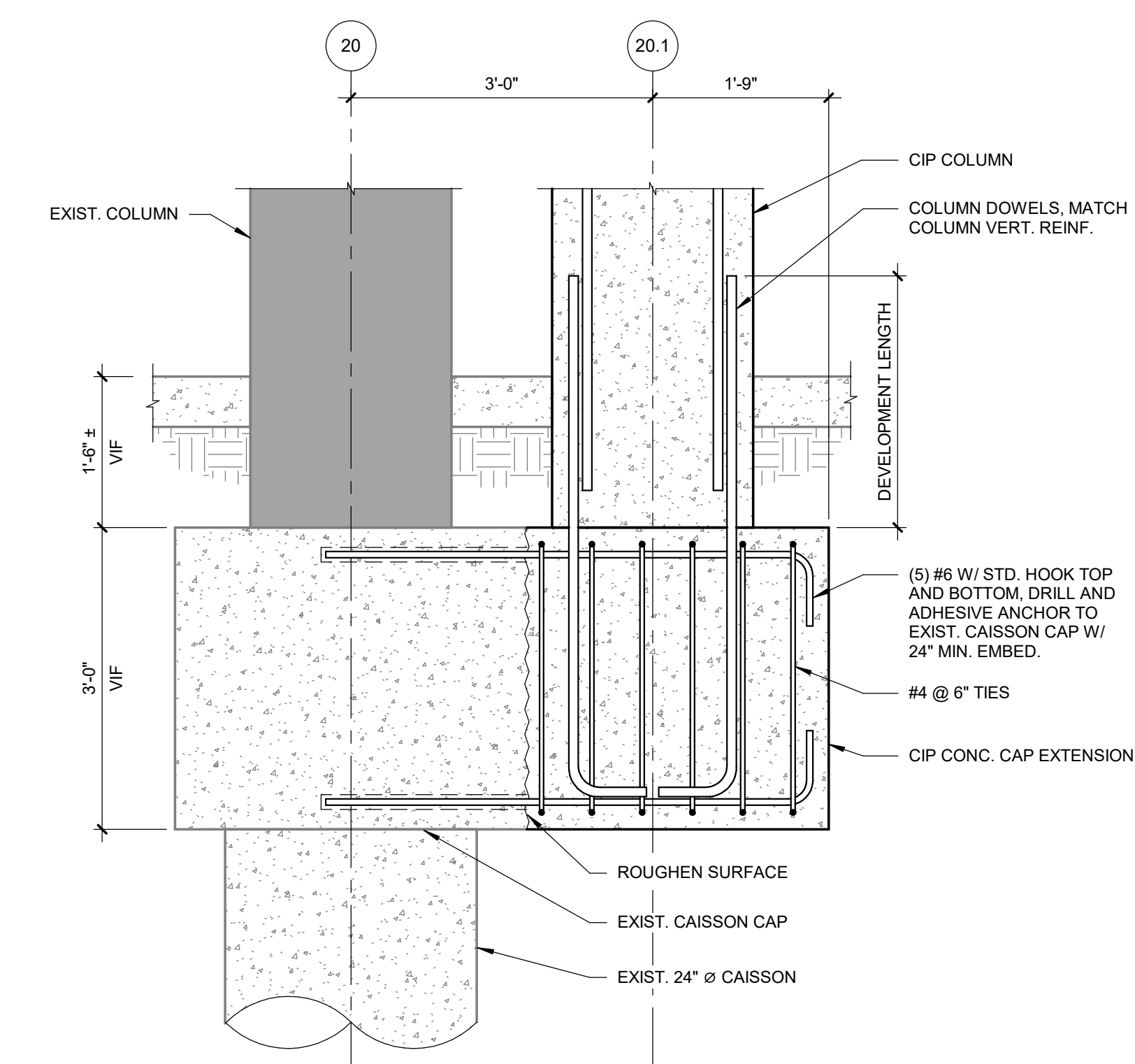


3 SLIDE BEARING DETAIL
SCALE: 1 1/2" = 1'-0"

NOTE: SLIDE BEARING PLATES SHALL CONSIST OF ULTRA HIGH MOLECULAR WEIGHT, HIGH DENSITY POLYETHYLENE RESIN (UHMW-PE). ACCEPTABLE PRODUCTS ARE KOROLATH PE BY KOROLATH OF NEW ENGLAND, POLYSTONE M BY ROHLING ENGINEERED PLASTICS USA, TVAR BY QUADRANT, OR APPROVED EQUIVALENT.



2 SECTION
SCALE: 3/4" = 1'-0"



1 SECTION
SCALE: 3/4" = 1'-0"

REVISIONS	
08/18/2022	A2 ADDENDUM #2

7/22/2022 BIDDING & CONSTRUCTION
Drawn By DEB
Designer FGE
Reviewer JBT
Manager JBT

Hard copy is intended to be 24"x36" when plotted. Scale(s) indicated and graphic quality may not be accurate for any other size.

PROJECT NO.
220597
SHEET NO.

PLOT INFO: 8/17/2022 11:04:20 AM C:\Work\Revit\2022_PK_220597_dan.brown\DPVZ.rvt