

MASSERMAN SPRINGDALE SUBDIVISION

COPY

Register's Office

Wayne County

Plat of Masserman Springdale Subdivision

was Recorded this 15th day of

November A.D., 1957 at 1:46 o'clock

P.M. in Liber 81 of plats

page 62

By Bernard J. Joughoud

ORIGINAL ON FILE

PART OF THE N.W. 1/4 OF SECTION 27, T.1S., R.8E.,

I hereby certify this copy is a true copy of map or plat forwarded the Register of deeds for recording.

Date November 15, 1957

FILED IN AUDITOR GENERAL'S DEPT.

Date November 18, 1957

EXAMINED AND APPROVED

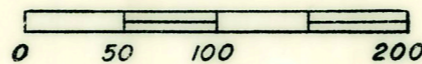
Date November 15, 1957

By *Frank S. Sumeracki* Auditor General

By *D. L. May* Notary Public

**CITY OF PLYMOUTH,
WAYNE COUNTY, MICHIGAN**

SCALE: ONE INCH = 100 FT.



NOTE: ALL DIMENSIONS ARE GIVEN IN FEET AND DECIMALS THEREOF.

ALL CURVILINEAR DIMENSIONS ARE SHOWN ALONG THE ARC.

APPROVED BY THE
BOARD OF COUNTY ROAD COMMISSIONERS
William E. Kreger
WILLIAM E. KREGER CHAIRMAN
DATE Nov. 6, 1957

DEDICATION

KNOW ALL MEN BY THESE PRESENTS that the Robersall Building Company, a Michigan Corporation, by L.S. Burton, President, and Nathaniel Share, Secretary, as proprietor, have caused the land embraced in the annexed plat to be surveyed, laid out and platted to be known as "Masserman Springdale Subdivision part of the N.W. 1/4 of Section 27, T. 1 S., R. 8 E., City of Plymouth, Wayne County, Michigan", and that the streets as shown on the said plat are hereby dedicated to the use of the public, and the private easements indicated on said plat are not dedicated to the public but the right to use said easements is hereby reserved for public utilities and for any other uses as designated hereon and no permanent structures are to be erected within the lines of said easements, subject to the regulation and control of the use thereof by the local governmental authority.

Signed and Sealed in the presence of:

ROBERSALL BUILDING COMPANY

Isadore Arnold Berger
ISADORE ARNOLD BERGER (Witness)

by *L.S. Burton*
L.S. Burton, President

Dan A. Manason
DAN A. MANASON (Witness)

Nathaniel Share
Nathaniel Share, Secretary

ACKNOWLEDGEMENT

STATE OF MICHIGAN)
COUNTY OF WAYNE) ss

ON THIS 25th DAY OF July A.D., 1957 before me Joan F. Duboise

a Notary Public, in and for said county appeared L.S. Burton, and Nathaniel Share to me personally known, who being each by me duly sworn did say that they are the president and secretary, respectively, of the Robersall Building Company, a Michigan Corporation, and that said instrument was signed in behalf of said corporation by authority of its Board of Directors and the said L.S. Burton and Nathaniel Share acknowledged said instrument to be the free act and deed of said corporation.

My Commission Expires

March 19, 1961

Joan F. Duboise
Notary Public, Wayne County (Joan F. Duboise)

MUNICIPAL APPROVAL

I hereby certify that this plat was approved by the City Commission of the City of Plymouth at a meeting held August 5, 1957, and that the width of lots is in compliance with the requirements of Section 30, Act 172, of 1929, as amended.

Kenneth E. Way
Kenneth E. Way Clerk

CITY PLANNING COMMISSION APPROVAL

I hereby certify that this plat was approved by the City Planning Commission of the City of Plymouth at a meeting held July 25, 1957.

Sidney D. Strong
Sidney D. Strong

DESCRIPTION OF LAND PLATTED

The land embraced in the annexed plat of Masserman Springdale Subdivision, part of the N.W. 1/4 of Section 27, T. 1 S., R. 8 E., City of Plymouth, Wayne County, Michigan, comprises Lots #1 to #49 inclusive, is described as follows:

Commencing at center 1/4 post of Section 27, T. 1 S., R. 8 E., City of Plymouth, Wayne County, Michigan; thence N. 3° 22' 21" W., 1123.06 feet along the north-south 1/4 line of Section 27, to the point of beginning; thence S. 86° 51' 26" W., 239.27 feet; thence N. 78° 33' 47" W., 120.42 feet; thence N. 70° 38' 33" W., 110.88 feet; thence N. 3° 08' 34" W., 124.25 feet; thence S. 86° 51' 26" W., 22.54 feet; thence N. 3° 22' 21" W., 840.00 feet; thence S. 86° 51' 26" W., 32.24 feet; thence N. 3° 08' 34" W. 200.00 feet; thence N. 86° 51' 26" E., 511.44 feet; thence along the north-south 1/4 line of Section 27, S. 3° 22' 21" E., 1237.00 feet to the point of beginning.

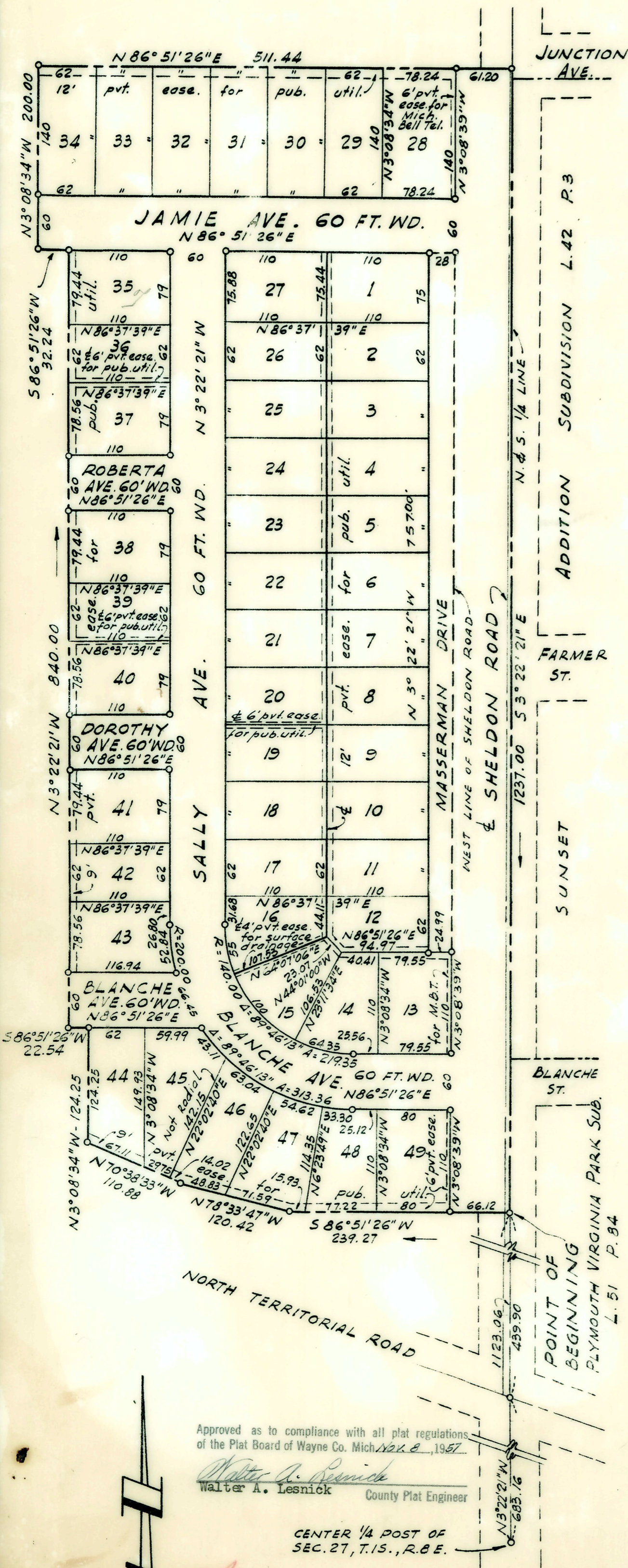
SURVEYOR'S CERTIFICATE

I hereby certify that the plat hereon delineated is a correct one, and that permanent monuments consisting of iron rods at least one-half inch in diameter and 36 inches in length, encased in concrete cylinders four inches in diameter and 36 inches in length, have been set at points marked thus (o) as thereon shown at all angles in the boundaries of the land platted, at all intersections of the lines of streets, and at intersections of the lines of streets with the boundaries of the plat.

Theodore G. Biehl
Theodore G. Biehl, Reg. Land Surveyor

APPROVED BY THE PLAT BOARD OF WAYNE COUNTY, MICH. THIS
DAY OF NOV 12 1957
Bernard J. Joughoud CHAIRMAN, Board of County Auditors
Chas. F. Edgcomb Chairman, Board of County Auditors
Jacob P. Sumeracki Vice-Chairman Board of County Auditors
Arthur A. Sumeracki Secretary, Board of County Auditors

THIS IS TO CERTIFY THAT THERE ARE NO TAX DUES OR FEES ON THIS PROPERTY, AND THAT TAXES ARE PAID FOR FIVE YEARS PREVIOUS TO DATE OF THIS INSTRUMENT.
EXCEPT
Handwritten signature
DATE OCT 29 1957
Handwritten signature



Approved as to compliance with all plat regulations of the Plat Board of Wayne Co. Mich. Nov 8, 1957
Walter A. Lesnick
Walter A. Lesnick County Plat Engineer

CENTER 1/4 POST OF SEC. 27, T.1S., R.8E.

MASSERMAN SPRINGDALE SUB.