

Jan 19-1926
L. Hunter

Jan 19-1926
L. Hunter

BROOK VIEW SUBDIVISION

PART OF THE N.W. 1/4 OF SECTION 35 T.15.R.8E.

PLYMOUTH TWP. WAYNE CO.

MICHIGAN

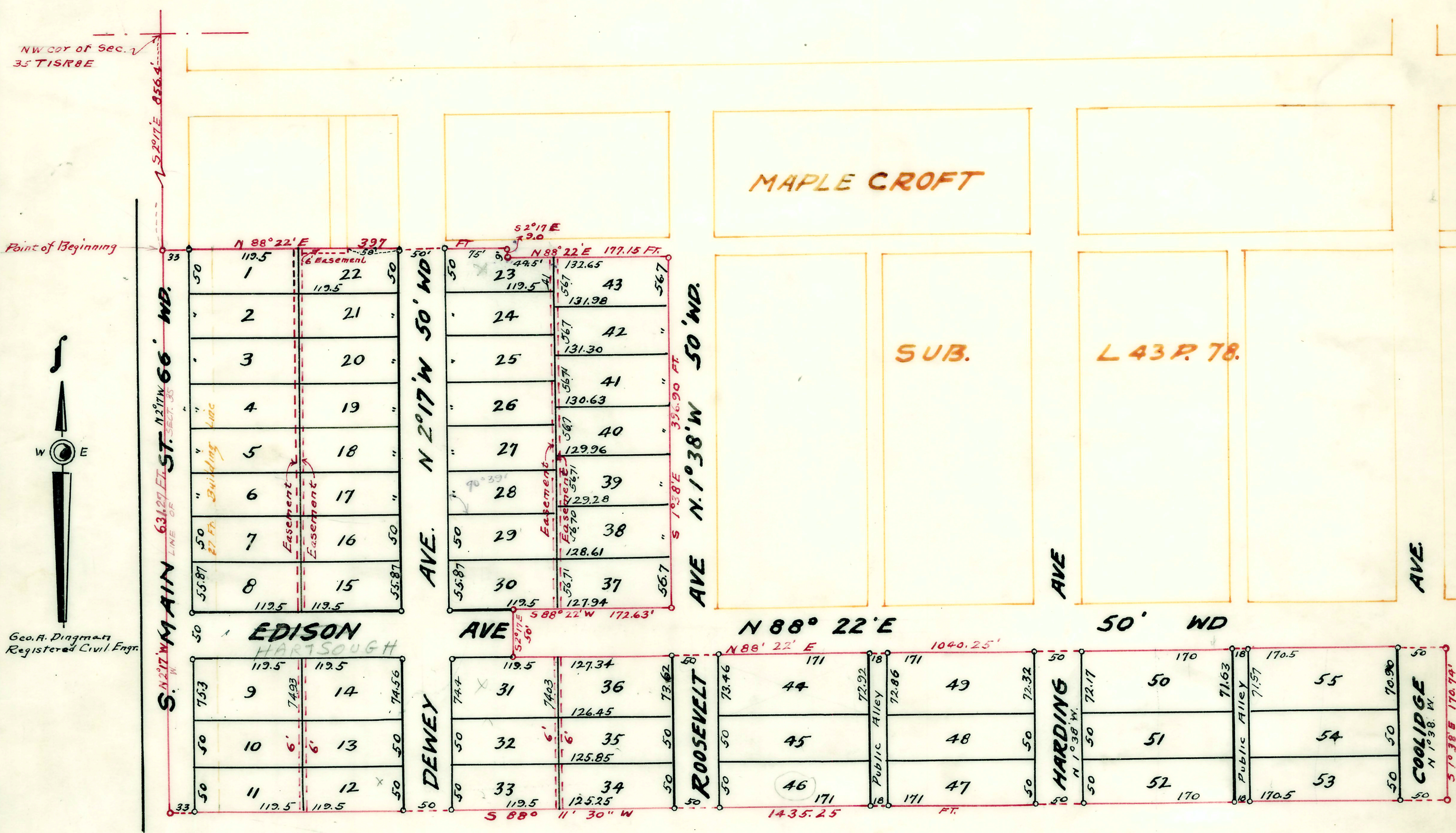
SCALE 1" = 100'

Jan 22-1926
L. Hunter

DESCRIPTION.

The land embraced in the annexed plat is described as follows:
beginning at a point in the W. line of Section 35, T.15.R.8E. and S.2°17'E.
856.40 ft. from the N.W. Cor. of said Section, running thence N88°22'E.
397 ft. thence S2°17'E 20 ft. thence N88°22'E 177.15 ft. thence S1°38'E
396.90 ft. thence S88°22'W 172.63 ft. thence S2°17'E 50 ft. thence N88°22'E
1040.25 ft. thence S1°38'E 170.74 ft. thence S88°11'30"W 1435.25 ft. to a
point in the W. line of Sect. 35, thence N2°17'W 631.27 ft. along said
line to point of beginning.

Wayne
Brook View Sub
20"
26 7/10
38 Plat
78
Bello Hall



Geo. A. Diagrams
Registered Civil Engineer

KNOW ALL MEN BY THESE PRESENTS:
That DEWEY M. BERDAN, single man, KATE E. ALLEN,
FRANK RAMBO, ALICE M. RAMBO his wife,
HARRY LUSH, single man, as proprietors
have caused the land embraced in the annexed plat to be surveyed,
laid out and platted, to be known as the
"BROOK VIEW SUBDIVISION, part of the N.W. 1/4 of
Section 35 T.15.R.8E. PLYMOUTH TWP. WAYNE
Co. MICHIGAN."
and that the streets and alleys shown on said plat are hereby dedicated to the use
of the public.
SIGNED AND SEALED IN PRESENCE OF
WITNESSES on this 29th day of December, 1925.

STATE OF MICHIGAN } S.S.
COUNTY OF WAYNE }
On this 29th day of December, 1925, before me,
a Notary Public, personally came the above named
Dewey M. Berdan, Kate E. Allen,
Frank Rambo, Harry B. Lush, and
Alice M. Rambo
known to me to be the persons who executed the above dedication and
acknowledged the same to be their free act and deed.
Notary Public, in and for, Wayne Co., Michigan.
My commission expires January 15, 1928

We hereby certify that this plat has been approved by the Township Board of
the Township of Plymouth, at
session held Jan 16, 1926
P. H. Whitbeck, SUPERVISOR,
Luisa Duffer, CLERK.

I hereby certify that the plat hereon delineated is a
correct one, and that permanent monuments con-
sisting of 1" by 15" pipes, set in concrete bases 4" in
diameter and 40" in depth, have been placed in the
ground at all points marked thus (o) as shown there-
on at all angles in the boundaries of the land platted
and at all intersections of streets, of alleys, or of
streets and alleys, or of streets or alleys with the
boundaries of the plat.

F. O. Dingman
Registered Civil Engineer-Surveyor

Dewey M. Berdan [LS]
Kate E. Allen [LS]
Frank Rambo [LS]
Harry B. Lush [LS]
Alice M. Rambo [LS]

Wayne County Treasurer's Office
Detroit, Mich. Jan. 8, 1926
I hereby certify that according to the records of
this Office all taxes for 1925 prior to the 29th
day of Dec. 25, 1925, have been paid, and that there
are no Tax Liens or Title Liens by the State or any
individual against the above described property.
Godfrey Preussel

APPROVED BY THE BOARD OF COUNTY
AUDITORS OF WAYNE COUNTY MICH. THIS
14th DAY OF Jan. 1926
John C. Cowan, CHAIRMAN
John Gutman