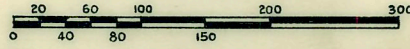


ASSESSOR'S PLYMOUTH PLAT NO. 16

OF THAT PART OF BRADNER AND HOLBROOK'S SUBD'N. LYING IN SEC. 23 AND OF PART OF THE S.W. 1/4 OF THE S.E. 1/4 OF SEC. 23, T.1S., R.8E.,

CITY OF PLYMOUTH, WAYNE CO., MICHIGAN

Scale: One Inch = 150 Ft.



NOTE: All dimensions are shown in feet and decimals thereof. All curvilinear dimensions are shown along the arc.

Examined and Approved

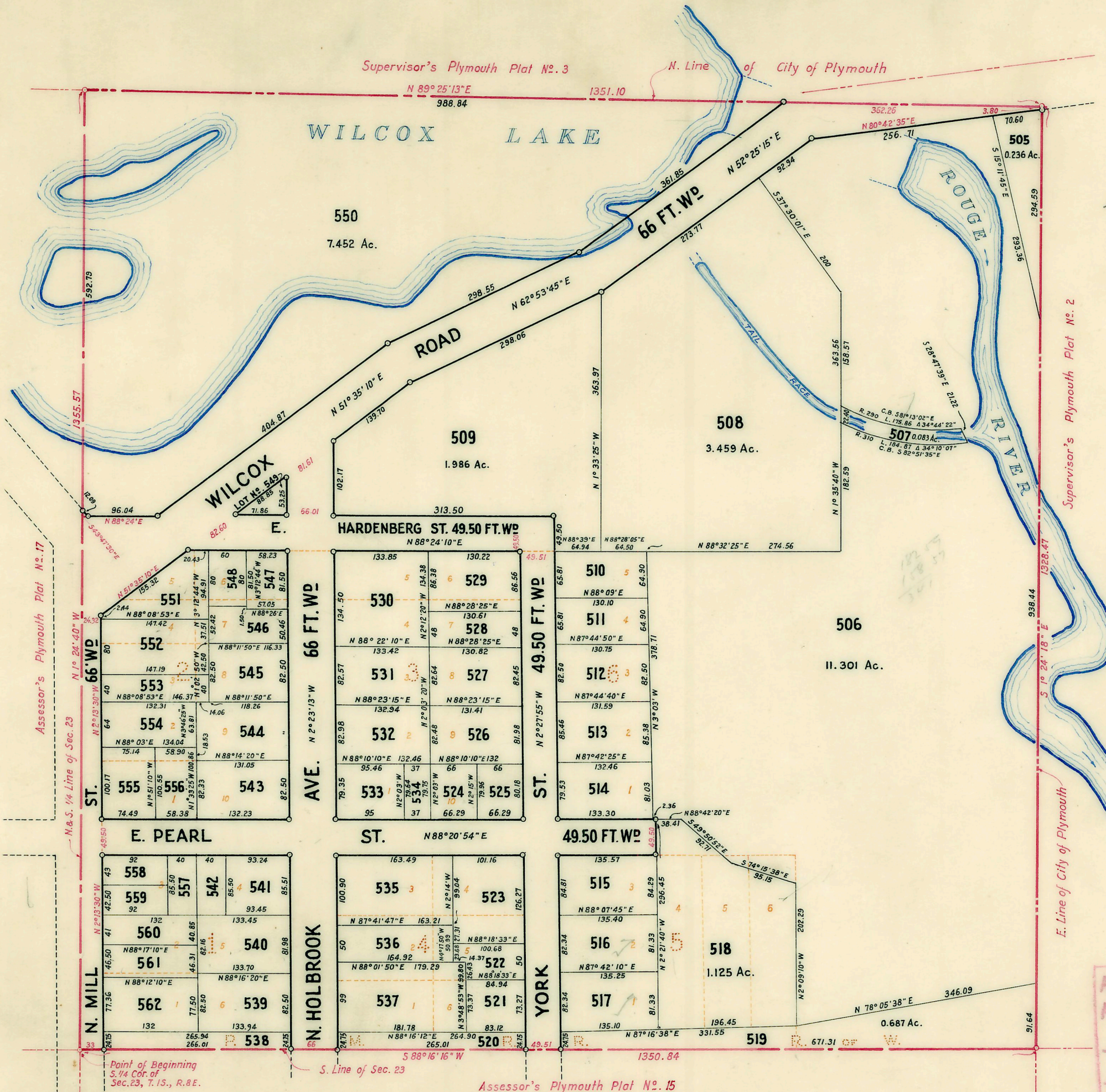
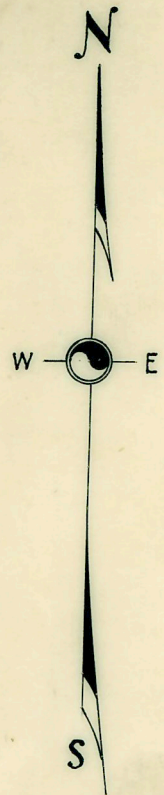
G.T. Hartman
G.T. HARTMAN Deputy Auditor General

I HEREBY CERTIFY THAT THIS COPY IS A TRUE COPY OF THE MAP OR PLAT FORWARDED THE REGISTER OF DEEDS FOR RECORDING.

COMPARED *4/20/39*
G.T. Hartman
G.T. HARTMAN DEPUTY AUDITOR GENERAL

FILED IN AUDITOR GENERAL'S DEPT

4/25/39
G.T. Hartman
G.T. HARTMAN DEPUTY AUDITOR GENERAL



EXAMINED & APPROVED
BOARD OF COUNTY ROAD COMMISSIONERS OF THE COUNTY OF WAYNE, MICHIGAN
John K. Norton
JOHN K. NORTON ROAD ENGINEER
DATE *MAR. 21 1939*

APPROVED BY THE BOARD OF COUNTY AUDITORS OF WAYNE COUNTY MICH. THIS
APR 18 1939
John C. Cowan
JOHN C. COWAN CHAIRMAN
Edward H. Williams
EDWARD H. WILLIAMS
RAY D. SCHNEIDER

DEDICATION

KNOW ALL MEN BY THESE PRESENTS, That I, William B. Petz, Assessor of the City of Plymouth, Wayne County, State of Michigan, by virtue of authority in me vested by Section 51 of Act 172, of the Public Acts of 1929, having been duly authorized by the City Commission, have caused the land described in the annexed plat to be surveyed, laid out and platted to be known as "Assessor's Plymouth Plat No. 16 of that part of Bradner and Holbrook's Subd'n. lying in Sec. 23 and of part of the S.W. 1/4 of the S.E. 1/4 of Sec. 23, T.1 S., R.8 E., City of Plymouth, Wayne Co., Michigan" and that title to the highways, streets, alleys and public places as shown on said plat has been acquired by the public by reason of purchase, dedication, condemnation or adverse possession for public use.

Witnesses:

Evelyn I. Burley
Evelyn I. Burley
Rosemary J. Lyke
Rosemary J. Lyke

William B. Petz
William B. Petz -
Assessor of the City of Plymouth

ACKNOWLEDGMENT

State of Michigan) SS.
County of Wayne)

On this *21st* day of *Feb.* A.D., 1939, before me, a Notary Public in and for said County, personally came the above named William B. Petz, Assessor of the City of Plymouth, known to me to be the person who executed the above dedication and acknowledged the same to be his free act and deed as such Assessor.

My commission expires *Dec 28 1940*

Chas. J. Thumme
Chas. J. Thumme
Notary Public, Wayne County, Mich.

CERTIFICATE OF MUNICIPAL APPROVAL

I hereby certify that this plat has been authorized and approved by the City Commission of the City of Plymouth at a session held at *7:30 P.M. Feb. 20, 1939*

C.H. Elliott
C.H. Elliott - Clerk

DESCRIPTION

The land embraced in the annexed "Assessor's Plymouth Plat No. 16 of that part of Bradner and Holbrook's Subd'n. lying in Sec. 23 and of part of the S.W. 1/4 of the S.E. 1/4 of Sec. 23, T.1 S., R.8 E., City of Plymouth, Wayne Co., Michigan" is described as follows: - Beginning at the S. 1/4 Cor. of Sec. 23, T.1 S., R.8 E. and proceeding thence N 1°24'40"W along the N. & S. 1/4 line of Sec. 23, said line being also the E. line of Assessor's Plymouth Plat No. 17, 1355.57 ft. to the S. line of Supervisor's Plymouth Plat No. 3; thence N 89°25'13"E along said line and the boundary of Supervisor's Plymouth Plat No. 2, 1351.10 ft.; thence S 1°24'18"E along the W. line of Supervisor's Plymouth Plat No. 2, 1328.47 ft. to the S. line of Sec. 23, said line being also the N. line of Assessor's Plymouth Plat No. 15; thence S 88°16'16"W along said line 1350.84 ft. to the point of beginning.

SURVEYOR'S CERTIFICATE

I hereby certify that the plat hereon delineated is a correct one, and that permanent metal monuments of not less than one inch in diameter and fifteen inches in length set in a concrete base at least four inches in diameter and forty-eight inches in depth have been placed at points marked (o) as thereon shown at all angles in the boundaries of the land platted, at all intersections of streets and at the intersections of streets with the boundaries of the plat as shown on said plat.

Register's Office
Wayne County
Plat of *Assessor's Plymouth*
Plat No. 16
was Recorded this *22nd* day of
April A.D., 19*39* at *9:52* O'Clock
A.M. in Liber *66* of Plats
on Page *82*
Harold E. Stoll
Register of Deeds
ORIGINAL ON FILE.

Harry B. Miller
Harry B. Miller -
Registered Land Surveyor