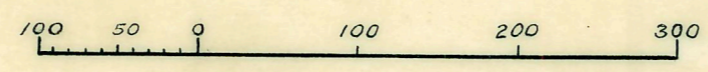


# ASSESSOR'S PLYMOUTH PLAT NO 13

of part of N.E. 1/4 of S.E. 1/4 of Sec. 27, T. 1 S. R. 8 E.,

## CITY OF PLYMOUTH WAYNE CO. MICH.

Scale 1" = 120'



Note: All dimensions are given in feet and decimals thereof

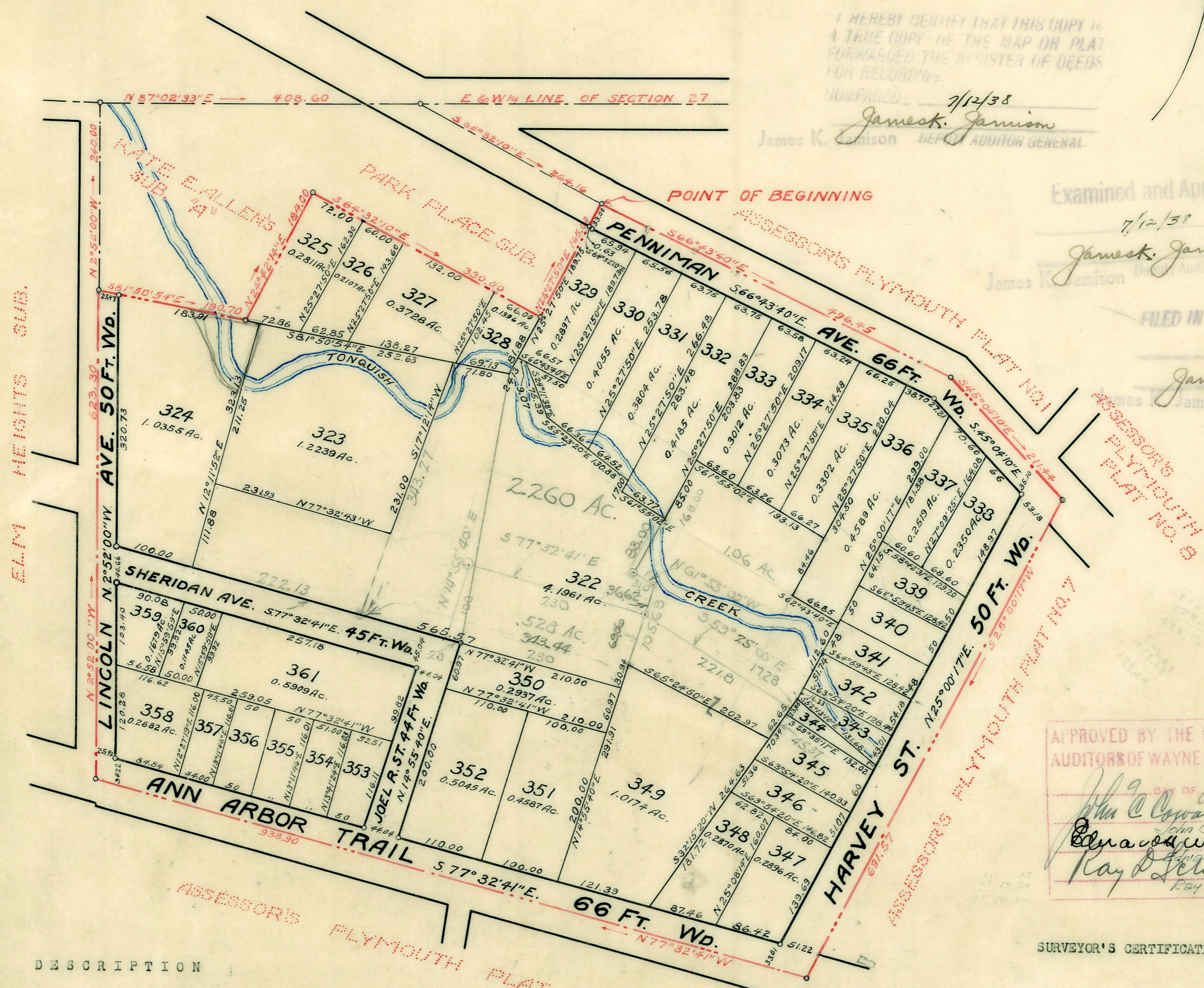
register's Office  
 Wayne County  
 Plat Assessor's Plymouth  
 Plat No. 13  
 14th day of  
 July 1938  
 66 Plates  
 Page 46  
 Harold E. Stoll  
 Register of Deeds

I HEREBY CERTIFY THAT THIS COPY IS A TRUE COPY OF THE MAP OR PLAT FORWARDED THE REGISTER OF DEEDS FOR RECORDING.

7/12/38  
 James K. Jamison  
 Auditor General

Examined and Approved  
 7/12/38  
 James K. Jamison  
 Auditor General

FILED IN AUDITOR GENERAL'S DEPT  
 7/15/38  
 James K. Jamison  
 Auditor General



APPROVED BY THE BOARD OF COUNTY AUDITORS OF WAYNE COUNTY MICH. THIS  
 19th day of July 1938  
 John C. Cowan CHAIRMAN  
 Edward H. Williams  
 Roy D. Schneider

SURVEYOR'S CERTIFICATE

I hereby certify that the plat hereon delineated is a correct one and that permanent metal monuments of not less than one inch in diameter and fifteen inches in length set in concrete bases at least four inches in diameter and forty-eight inches in depth have been placed at points marked thus (o) as thereon shown at all angles in the boundaries of the land platted, at all the intersections of streets, intersections of alleys, or of streets and alleys, and at the intersections of streets and alleys with the boundaries of the plat.

Herald F. Hamill  
 Herald F. Hamill  
 Registered Land Surveyor.

**DESCRIPTION**  
 The land embraced in the annexed "ASSESSOR'S PLYMOUTH PLAT NO. 13 OF PART OF N.E. 1/4 OF S.E. 1/4 OF SEC. 27, T. 1 S. R. 8 E., CITY OF PLYMOUTH, WAYNE CO., MICH." is described as follows: Beginning at a point on the center line of Penniman Avenue, distant 3.64°32'10"E., 264.16 feet from the intersection of said center line with the E. & W. 1/2 line of Section 27, T. 1 S. R. 8 E., and proceeding thence along said center line S. 66°43'40"E., 496.45 feet and S. 45°04'10"E., 211.44 feet; thence along the easterly line of Harvey St., S. 25°00'17"W., 691.57 feet; thence along the center line of Ann Arbor Trail, N. 77°32'41"W., 938.90 feet; thence along the center line of Elm Heights Sub., N. 2°52'00"W., 623.30 feet; thence along the boundary of Kate E. Allen's Sub. "A", S. 81°50'54"E., 190.70 feet and N. 24°42'14"E., 164.00 feet; thence along the boundary of Park Place Sub., S. 64°32'10"E., 330.00 feet and N. 25°27'50"E., 165.00 feet to the point of beginning.

**DEDICATION**  
 KNOW ALL MEN BY THESE PRESENTS: that I, William B. Petz, Assessor of the City of Plymouth, Wayne County, Michigan, by virtue of authority in me vested by Sec. 51, Act 172, of 1929, having been duly authorized by the City Commission, have caused the land embraced in the annexed plat to be surveyed, laid out and platted, to be known as the "ASSESSOR'S PLYMOUTH PLAT NO. 13 OF PART OF N.E. 1/4 OF S.E. 1/4 OF SEC. 27, T. 1 S. R. 8 E., CITY OF PLYMOUTH, WAYNE CO., MICH." and I hereby certify that the title to streets shown on said plat has been acquired by the public by reason of purchase, dedication, condemnation, adverse possession, prescription or user.

SIGNED AND SEALED IN PRESENCE OF  
 WITNESSES:  
 Herald F. Hamill  
 Chas. H. Garlett

William B. Petz  
 L.S.  
 William B. Petz

**ACKNOWLEDGEMENT**  
 STATE OF MICHIGAN } S.S.  
 COUNTY OF Wayne }  
 On this 2 day of May 1938, before me,  
 a Notary Public, personally came the above named  
 William B. Petz, Assessor of the City of Plymouth,  
 Wayne County, Michigan,  
 known to me to be the person who executed the above dedication and  
 acknowledged the same to be his free act and deed as such assessor.  
 Chas. H. Garlett  
 Notary Public, in and for Wayne County, Michigan.  
 My commission expires Feb. 2nd 1940.

**MUNICIPAL APPROVAL**  
 I hereby certify that this plat has been approved by the City Commission of the City of Plymouth at a session held  
 May 2 1938  
 C.H. Elliott  
 CLERK

EXAMINED & APPROVED  
 BOARD OF COUNTY ROAD COMMISSIONERS  
 OF THE COUNTY OF WAYNE, MICHIGAN  
 John K. Norton  
 JOHN K. NORTON ROAD ENGINEER  
 DATE June 14, 1938