

ASSESSOR'S PLYMOUTH PLAT NO 7

of part of S.E. 1/4 of Sec. 27, and part of S.W. 1/4 of Sec. 26, T. 15. R. 8. E.

PLYMOUTH VILLAGE
WAYNE CO. MICH.

SCALE: 1" = 50'

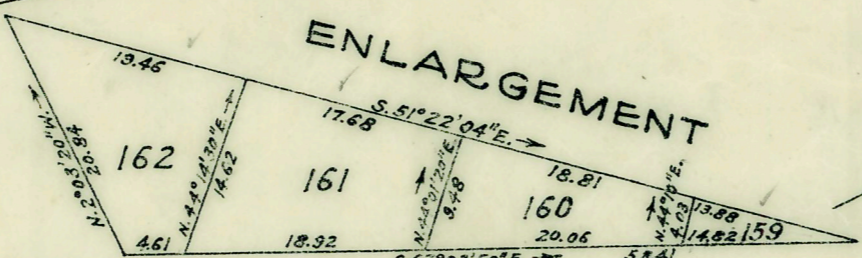
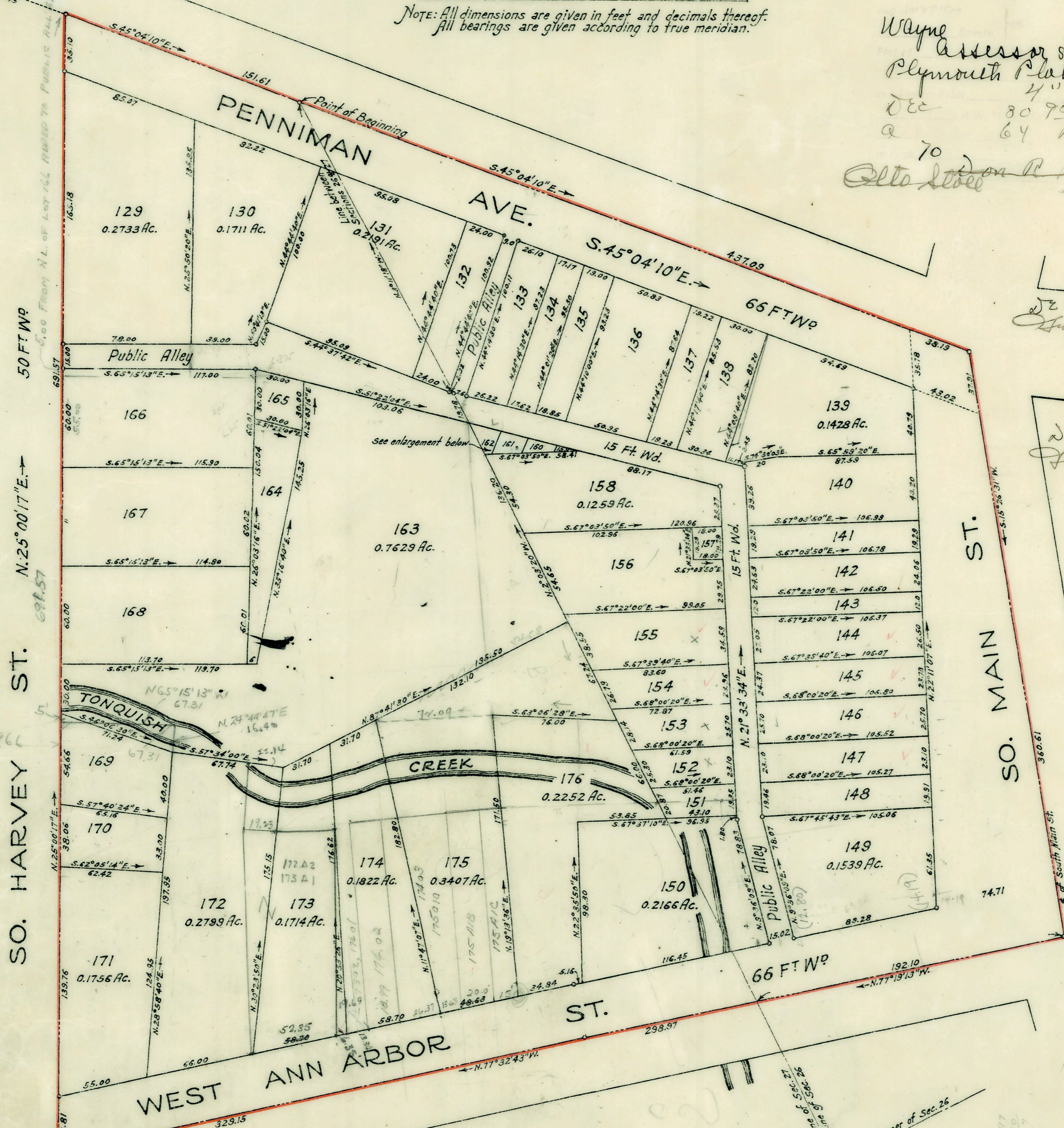
NOTE: All dimensions are given in feet and decimals thereof.
All bearings are given according to true meridian.

Dec 2-1980
Geo L. Hurrell

Wayne
Assessor's
Plymouth Plat No. 7
Dec 80 980
a 70 64 Plate
Olto Steel

Dec 2-1980
Geo L. Hurrell

Dec 8-1980
Geo L. Hurrell



I hereby certify that the plat hereon delineated is a correct one, and that permanent metal monuments of not less than one inch in diameter and fifteen inches in length set in a concrete base at least four inches in diameter and forty-eight inches in depth have been placed at points marked thus (a) as thereon shown at all angles in the boundaries of the land platted, at all the intersections of streets, intersections of alleys or of streets and alleys, and at the intersections of streets and alleys with the boundaries of the plat as shown on said plat.

Henry L. Hurrell
Registered Surveyor

Know ALL MEN BY THESE PRESENTS: that I, Geo. W. Richwine, Assessor of the Village of Plymouth, Wayne County, State of Michigan, by virtue of authority in me vested by Section 31, Act 172 of 1829 having been duly authorized by the Village Commission of the Village of Plymouth to cause the land described in the annexed plat to be surveyed, laid out and platted to be known as Assessor's Plymouth Plat No. 7 of part of S.E. 1/4 of Sec. 27 and part of S.W. 1/4 of Sec. 26, T. 15. R. 8. E. Plymouth Village, Wayne Co. Mich. and that the streets and alleys as shown on said plat are now being used for such purposes.

Witnesses:
Edison J. Hurrell Assessor of Plymouth Village
Olto Steel

STATE OF MICHIGAN } ss:
County of Wayne }
On this 19 day of November A.D. 1980, before me, a Notary Public in and for said county, personally came the above named George W. Richwine, Assessor of the Village of Plymouth, known to me to be the person who executed the above dedication and acknowledged the same to be his free act and deed as such assessor.

Notary Public, in and for Wayne County, Michigan
My Commission expires July 5, 1992

DESCRIPTION
The land embraced in the plat of Assessor's Plymouth Plat No. 7 of part of S.E. 1/4 of Sec. 27 and part of S.W. 1/4 of Sec. 26, T. 15. R. 8. E. Plymouth Village, Wayne Co. Mich. is described as follows: Beginning at the intersection of the line between said Sections 26 and 27 with the center line of Penniman Ave. and running thence S. 45° 04' 10" E. 437.03 ft to a point; thence along the center line of South Main St. S. 15° 26' 31" W. 350.61 ft to a point; thence along the center line of West Ann Arbor St. N. 77° 19' 13" W. 298.97 ft to a point; thence continuing along said center line N. 77° 32' 43" W. 329.13 ft to a point; thence along the East line of South Harvey St. N. 25° 00' 17" E. 691.57 ft to a point; thence along the center line of Penniman Ave. S. 45° 04' 10" E. 151.61 ft to the point of beginning.

APPROVED BY THE BOARD OF COUNTY AUDITORS OF WAYNE COUNTY MICH. THIS

CHIEF

I hereby certify that this plat has been approved and approved by the Village Commission of Plymouth Village, Michigan.

Nov 20 1980
Village Clk. and Mayor