

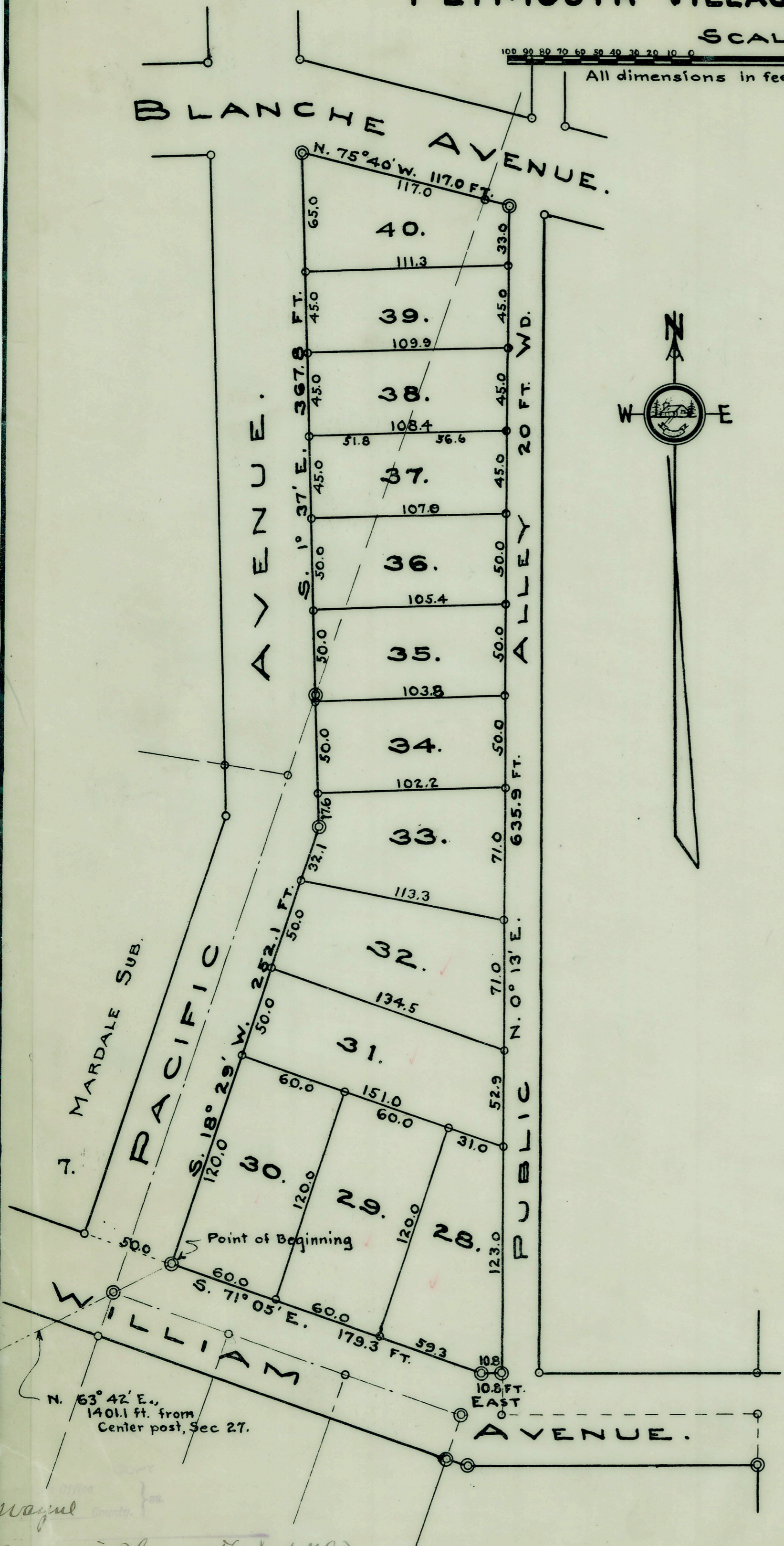
# ASSESSOR'S PLYMOUTH SUB. No. 3,

OF PART OF THE N.E. 1/4 OF SEC. 27, T.15., R.8E.,  
PLYMOUTH VILLAGE, WAYNE CO., MICH.

Examined and Approved  
July 15-1929  
L. B. Howell  
County Auditor

SCALE: 1"=50'

All dimensions in feet and decimals thereof.



Know all men by these presents; that I, George W. Richwine, Assessor of the Village of Plymouth, Wayne County, State of Michigan, have caused the land embraced in the annexed plat to be surveyed, laid out and platted, to be known as "Assessor's Plymouth Sub. No. 3," of part of the N.E. 1/4 of Sec. 27, T.15., R.8E., Plymouth Village, Wayne Co., Mich., and that the streets shown on said plat are hereby dedicated to the use of the public.

Given under authority of and according to Sec. 2, Act 360, Public Acts of 1925, State of Michigan.

I hereby certify further that the title to the streets shown on said plat has been acquired for the public by reason of purchase, dedication, condemnation or adverse possession.

Signed and in the presence of

Witnesses:  
Alfred Pierce George W. Richwine  
Assessor of Village of Plymouth.  
Nellie J. Cook

I hereby certify that this plat has been authorized and approved by the Village Commission of the Village of Plymouth at a session held May 20th 1929

Joseph J. Koenig  
Manager

State of Michigan }  
County of Wayne } ss:

On this 28 day of May 1929, before me, a Notary Public, personally came the above named George W. Richwine known to me to be the person who executed the above dedication and acknowledged the same to be his free act and deed.

Florence M. Parrott  
Notary Public in and for Wayne County, Michigan

My Commission expires December 1st 1929

I hereby certify that the plat hereon delineated is a correct one, and that permanent monuments consisting of 1"x15" pipes, set in concrete bases 4" in diameter and 48" in depth, have been placed in the ground at all points marked thus (⊙) as shown thereon at all angles in the boundaries of the land platted, and at all intersections of streets, of alleys, or of streets and alleys, or of streets or alleys with the boundaries of the plat.

Sidney D. Strong  
Registered Civil Engineer.

### DESCRIPTION.

The land embraced in the annexed plat of "Assessor's Plymouth Sub. No. 3," of part of the N.E. 1/4 of Sec. 27, T.15., R.8E., Plymouth Village, Wayne Co., Mich., is described as follows:

Beginning at a point in the North line of William Ave and in the East line of Pacific Ave. situated S. 71° 05' E., 50.0 ft. from the S.E. corner of Lot 7 of "Mardale Sub. of part of the N.E. 1/4, Sec. 27, T.15., R.8E., Plymouth Village, Wayne Co., Mich." as recorded in Liber 47 of Plats, page 80 in the office of the Register of Deeds for Wayne Co., Mich.; which point is also situated N. 63° 42' E., 1401.1 ft. from the center post of said Sec. 27.  
Thence S. 71° 05' E. along the N. line of William Ave. 179.3 ft. to a point;  
Thence East along the N. line of William Ave. 10.8 ft. to a point;  
Thence N. 0° 13' E. along the W. line of 20 ft. Public Alley 635.9 ft. to a point;  
Thence N. 75° 40' W. along the S. line of Blanche Ave. 117.0 ft. to a point;  
Thence S. 1° 37' E. along the E. line of Pacific Ave. 367.8 ft. to a point;  
Thence S. 18° 29' W. along the E. line of Pacific Ave. 252.1 ft. to the point of beginning

APPROVED BY THE BOARD OF COUNTY  
AUDITORS OF WAYNE COUNTY MICH. THIS  
13 day of June 1929  
W. H. Green CHAIRMAN  
Geo. J. Brown

July 15-1929  
L. B. Howell  
County Auditor

Waguel  
Assessor's Plymouth Sub. No. 3  
July 29 1929  
Plat 63  
86  
Otto Stoll  
July 18-1929  
L. B. Howell