

# ASSESSOR'S PLYMOUTH SUB. NO. 1

June 8 1928  
To L. Howell

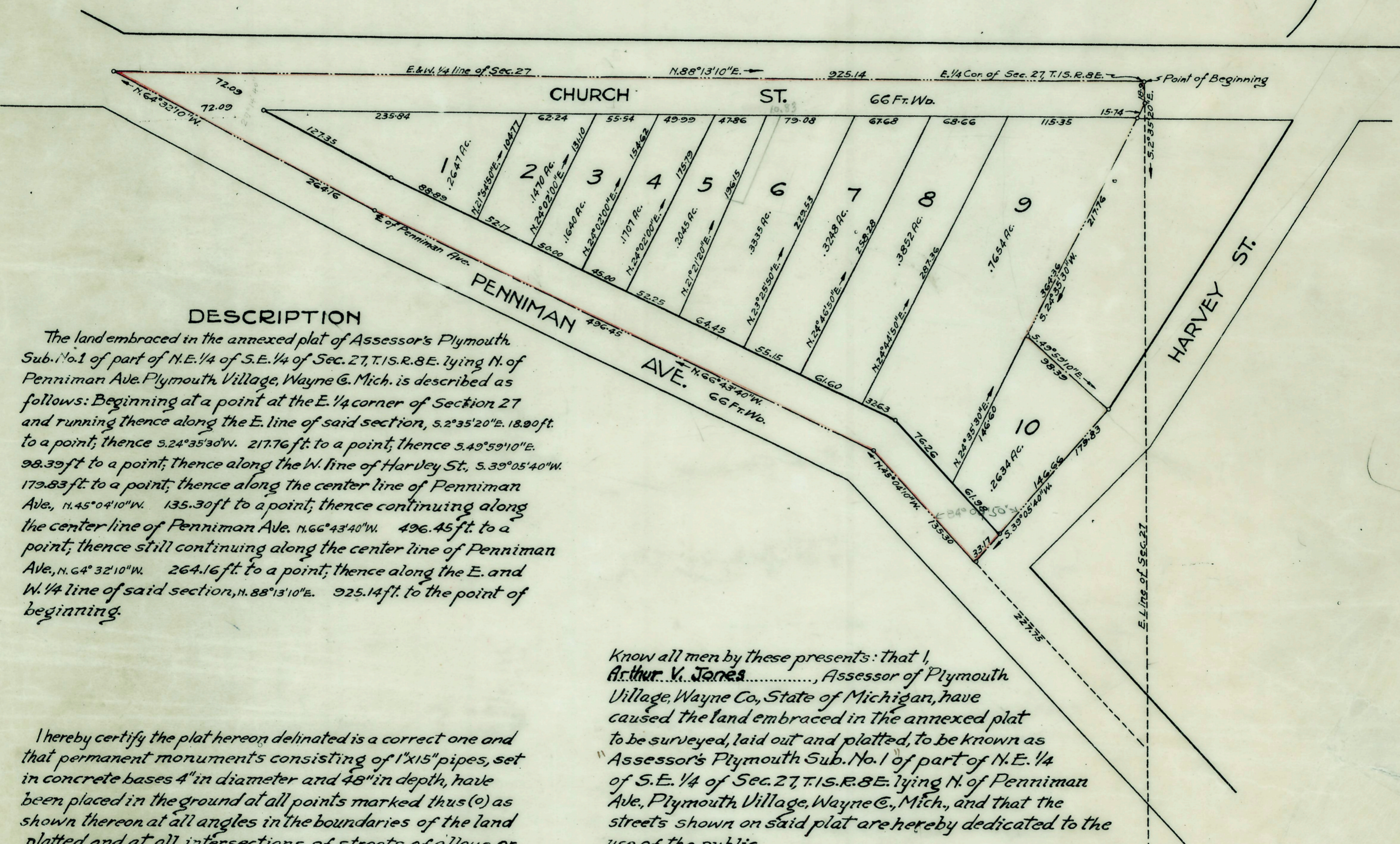
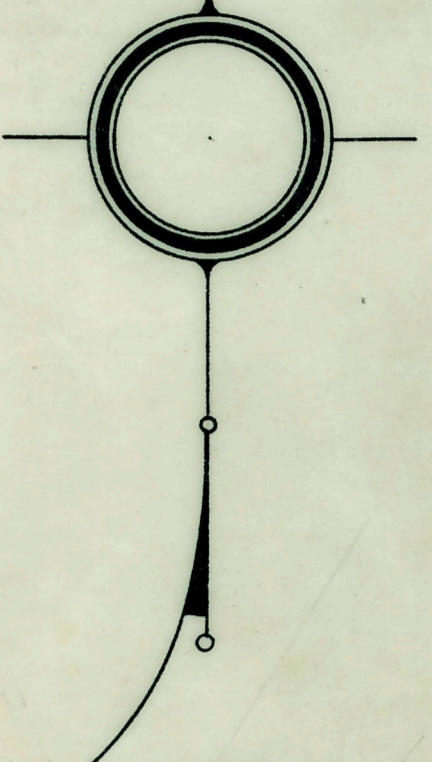
Wayne Assessor  
Plymouth Sub No 1  
June 12 7 10  
63 Plats  
O. G. Shear

of part of N. E. 1/4 of S. E. 1/4 of Sec. 27, T. 15, R. 8 E. lying N. of Penniman Ave.

PLYMOUTH VILLAGE  
WAYNE CO. MICH.  
June 13 1928  
L. Howell

June 8 - 1928  
L. Howell

SCALE: 1" = 80'  
NOTE: All dimensions are given in feet and decimals thereof  
All bearings according to true meridian



### DESCRIPTION

The land embraced in the annexed plat of Assessor's Plymouth Sub. No. 1 of part of N. E. 1/4 of S. E. 1/4 of Sec. 27, T. 15, R. 8 E. lying N. of Penniman Ave. Plymouth Village, Wayne Co. Mich. is described as follows: Beginning at a point at the E. 1/4 corner of Section 27 and running thence along the E. line of said section, S. 2° 35' 20" E. 18.90 ft. to a point; thence S. 24° 35' 30" W. 217.76 ft. to a point; thence S. 49° 59' 10" E. 99.39 ft. to a point; thence along the W. line of Harvey St., S. 39° 05' 40" W. 179.83 ft. to a point; thence along the center line of Penniman Ave., N. 45° 04' 10" W. 135.30 ft. to a point; thence continuing along the center line of Penniman Ave. N. 66° 43' 40" W. 496.45 ft. to a point; thence still continuing along the center line of Penniman Ave., N. 64° 32' 10" W. 264.16 ft. to a point; thence along the E. and W. 1/4 line of said section, N. 88° 13' 10" E. 925.14 ft. to the point of beginning.

I hereby certify the plat hereon delineated is a correct one and that permanent monuments consisting of 1"x15" pipes, set in concrete bases 4" in diameter and 48" in depth, have been placed in the ground at all points marked thus (o) as shown thereon at all angles in the boundaries of the land platted, and at all intersections of streets, of alleys, or of streets and alleys with the boundaries of the plat.

Henry J. Kumba  
Registered Surveyor

I hereby certify that this plat has been authorized and approved by the Village Commission at the Plymouth Village at a session held April 7 1928  
O. G. Shear  
Acting Manager

Know all men by these presents: that I, Arthur V. Jones, Assessor of Plymouth Village, Wayne Co., State of Michigan, have caused the land embraced in the annexed plat to be surveyed, laid out and platted, to be known as "Assessor's Plymouth Sub. No. 1" of part of N. E. 1/4 of S. E. 1/4 of Sec. 27, T. 15, R. 8 E. lying N. of Penniman Ave., Plymouth Village, Wayne Co., Mich., and that the streets shown on said plat are hereby dedicated to the use of the public.

Given under authority of and according to Sec. 2, Act 360, Public Acts of 1925, State of Michigan.

I hereby certify further that the title to the streets shown on said plat has been acquired for the public by reason of purchase, dedication, condemnation or adverse possession.

Signed and sealed in the presents of  
Witnesses

H. F. Hamill Arthur V. Jones (L.S.)  
Geo. H. Schwine Assessor of Plymouth Village

APPROVED BY THE BOARD OF COUNTY AUDITORS OF WAYNE COUNTY MICH. THIS  
4<sup>th</sup> DAY OF June 1928  
Edm. Galtman CHAIRMAN  
W. H. Green  
John G. Power

STATE OF MICHIGAN }  
COUNTY OF WAYNE }  
On this 2nd day of April 1928,  
before me, a Notary Public, personally came the above named Arthur V. Jones known to me to be the person who executed the above dedication and acknowledged the same to be his free act and deed. as Sub-assessor  
Henry J. Kumba  
Notary Public, in and for Wayne County, Michigan  
My Commission expires September 13, 1930