

# THE AMELIA STARKWEATHER ADDITION TO PLYMOUTH VILLAGE

subdivision of part of the N.W. 1/4 of section 26, T.15.R.8E.  
PLYMOUTH VILLAGE

WAYNE CO. MICH.

Examined and Approved  
Feb 14 1919  
Geo L. Hauser  
Deputy Auditor General

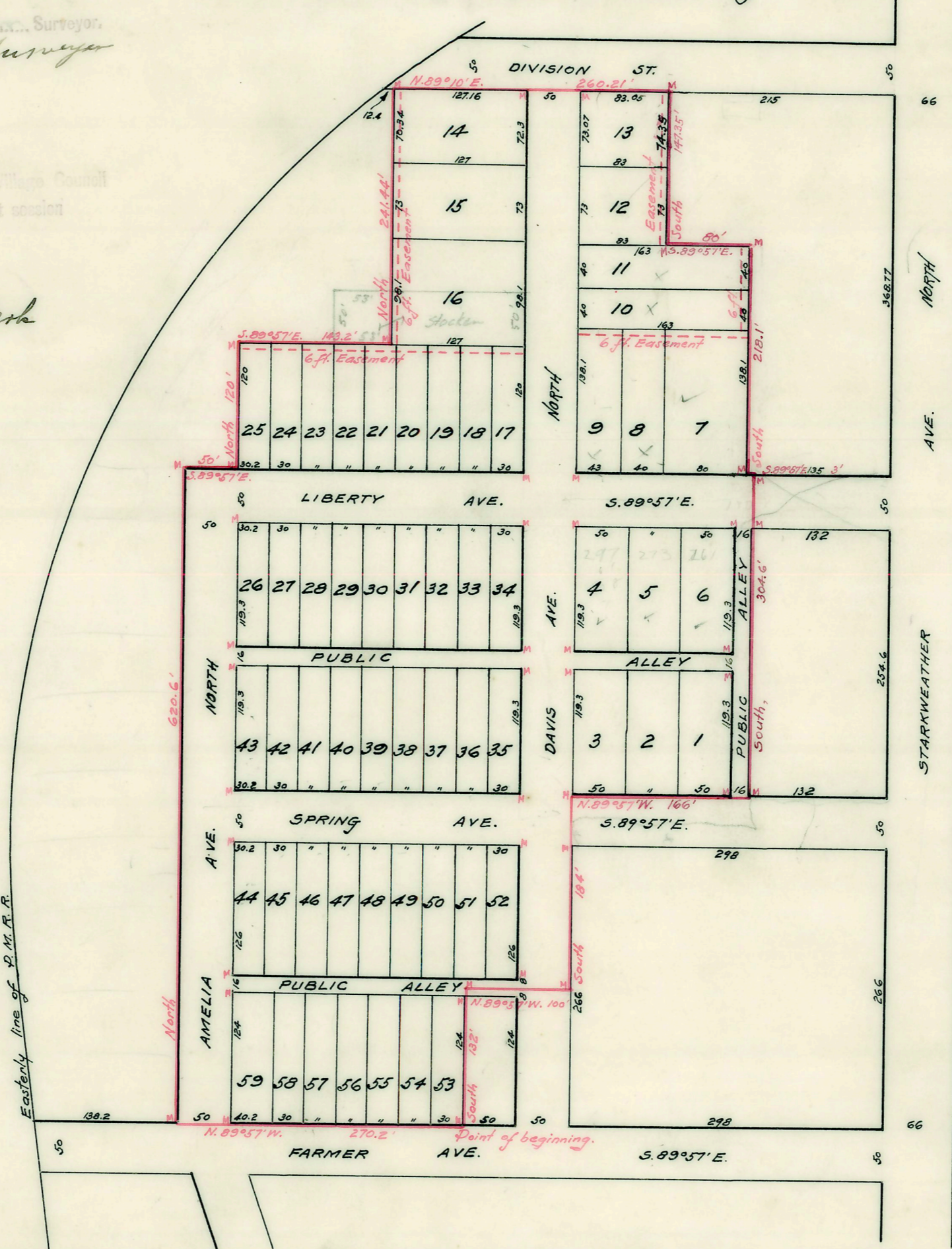
WILLMARTH ENGINE'G CO.  
REDFORD, MICH.

I hereby certify that the plat herein delineated is a correct and true representation of the ground as shown thereon at all angles in the boundary of the land platted and at all intersections of streets or streets and alleys.

Willmarth Eng'g Co  
By H. J. Willmarth Surveyor

Plymouth  
February 3 1919  
G. G. Brown  
Village Clerk

Scale: 120 ft. = 1 in.  
NOTE: All dimensions are given in feet and decimals thereof



NOTE: The rear 6 ft. of lots 7 to 25 are dedicated for the use of all public utilities except vehicular traffic.

Wayne county  
Amelia  
Starkweather Addition  
PLAT  
WAS RECORDED THIS 15th DAY OF Feb 1919  
A. D. 1919 AT 9:15 O'CLOCK  
IN LIBER 39 OF PLAT  
65  
By Charles H. Burkhardt  
Deputy Register

A TRUE COPY OF THE MAP OR PLAT  
FORWARDED THE REGISTER OF DEEDS  
FOR RECORDING  
Feb 14 1919  
Geo L. Hauser  
DEPUTY AUDITOR GENERAL

FILED IN AUDITOR GENERAL'S DEPT.  
Feb 19-1919  
Geo L. Hauser  
DEPUTY AUDITOR GENERAL

### DESCRIPTION.

The land embraced in the annexed plat of Amelia Starkweather Addition to Plymouth Village, subdivision of part of the N.W. 1/4 of section 26, T.15.R.8E. Plymouth Village, Wayne Co. Mich. is described as follows: Beginning at a point in the north line of Farmer ave., 398 ft. west from the west line of Starkweather ave. and running thence N. 89° 57' W. 270.2 ft. to a point; thence North, 620.6 ft. to a point; thence S. 89° 57' E. 50 ft. to a point; thence North, 120 ft. to a point; thence S. 89° 57' E. 143.2 ft. to a point; thence North, 241.44 ft. to a point; thence along the south line of Division st., N. 89° 10' E. 260.21 ft. to a point; thence South, 147.35 ft. to a point; thence S. 89° 57' E. 80 ft. to a point; thence South, 218.1 ft. to a point; thence S. 89° 57' E. 3 ft. to a point; thence South, 304.6 ft. to a point; thence N. 89° 57' W. 166 ft. to a point; thence South, 134 ft. to a point; thence N. 89° 57' W. 100 ft. to a point; thence South, 132 ft. to the point of beginning.

KNOW ALL MEN BY THESE PRESENTS:  
that Mary K. Hillmer  
as proprietors, have caused the land embraced in the annexed plat to be surveyed,  
laid out and platted, to be known as the  
Amelia Starkweather Addition to  
Plymouth Village, Wayne County, Michigan  
and that the streets and alleys shown on said plat are hereby dedicated to the use  
of the public.  
SIGNED AND SEALED IN PRESENCE OF  
WITNESSES on this 3rd day of Febr 1919  
Mary K. Hillmer (L.S.)

STATE OF MICHIGAN } S.S.  
COUNTY OF Wayne }  
On this 3rd day of Febr 1919, before me,  
a Notary Public, personally came the above named  
Mary K. Hillmer  
known to me to be the person, who executed the above dedication and  
acknowledged the same to be her free act and deed.  
Ernest J. Passaga  
Notary Public, in and for Wayne, Michigan.  
My commission expires Nov 19th 1920

APPROVED BY THE BOARD OF COUNTY  
AUDITORS OF WAYNE COUNTY MICH. THIS  
10th DAY OF Feb 1919  
Wm. A. Hillmer CHAIRMAN  
Wm. J. Miller

Wayne County Treasurer's Office  
Detroit, Mich. 8th Feb. 1919  
I hereby certify that according to the Records of  
this Office all Taxes for five years prior to the 3rd  
day of Feb, 1919 are paid, and that there  
are no Tax liens or titles held by the State or any  
individual against the above described property.  
Wm. J. Miller  
WAYNE COUNTY TREASURER

Wm. J. Miller }  
E. J. Passaga }  
Louis Hillmer }